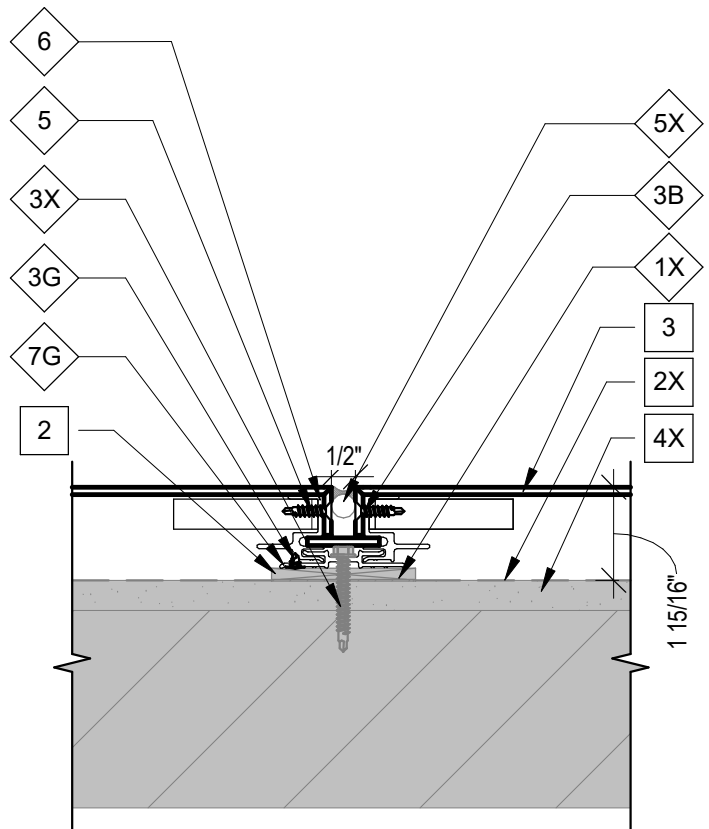


1 W5000 1/2" HORIZONTAL JOINT DETAIL
O402 SCALE: 3" = 1'-0"



2 W5000 VERTICAL JOINT DETAIL
O402 SCALE: 3" = 1'-0"

.HARDWARE AND MATERIAL SCHEDULE

HARDWARE	
1X	SELF-SEALING TAPE NOT BY UBISM
2	1/4" SHIM BY UBISM, REQUIRED
3B	#10-16x1" PFH TEK-3 BY UBISM
3G	#6x3/8" WFH TEK-3 BY UBISM
3N	SX3-D12 BI-MET BY UBISM
3Q	TUF-S 6x9-A4 BY UBISM
3R	LEVELING BOLT, 1/4"x5/8" BY UBISM
3U	SX3-D10
3X	FASTENER NOT BY UBISM
4	WEEP SCREEN
5	ALUM. CORNER KEY BY UBISM, F.I.
6	ALUM. FRAME BY UBISM, F.I.
7G	ALUMINUM WALL CLIP BY UBISM
7K	ALUMINUM CLIP BY UBISM
7L	C-PLANK CLIP BY UBISM
9	POP RIVET BY UBISM, F.I.
17	1" HAT CHANNEL BY UBISM
17X	1" HAT CHANNEL NOT BY UBISM

.HARDWARE AND MATERIAL SCHEDULE

18	2" Z CHANNEL NOT BY UBISM
20	ALUMINUM RAIL NOT BY UBISM
1X	INSULATION NOT BY UBISM
2X	WEATHER RESISTANT BARRIER, NOT BY
3	4MM MCM PANEL BY UBISM, F.I.
4X	WALL CONSTRUCTION NOT BY UBISM
5X	BACKER ROD & SEALANT NOT BY UBISM
6	4MM MCM SPLINE BY UBISM



This document contains information proprietary to UBISM, INC. It is to be kept confidential and not applied, reproduced, used or conveyed to others without written authorization from UBISM, INC.

GENERAL NOTES

- 18 G.A. STRAPPING MAY BE REQ'D OVER DENSGLASS SUBSTRATE FOR PANEL ATTACHMENT.
- SEE DETAILS FOR FASTENER AND FLASHING SEALING PROCEDURES AS REQUIRED BY AIR BARRIER TYPE USED.
- ALL DIMENSIONS SHALL BE FIELD VERIFIED PRIOR TO FABRICATION.
- KEYNOTES REFER TO THE HARDWARE AND MATERIAL SCHEDULE. KEYNOTES MARKED WITH AN "X" ARE NOT SUPPLIED BY CEI.
- DIAMOND ◊ KEYNOTES REFER TO THE CORRESPONDING ID IN THE HARDWARE SCHEDULE.
- SQUARE □ KEYNOTES REFER TO THE CORRESPONDING ID IN THE MATERIAL SCHEDULE.
- "F.I." IN THE HARDWARE AND MATERIAL SCHEDULES IS AN ABBREVIATION OF "FACTORY INSTALLED".

W5000 ONLINE TYPICAL DETAILS

O402