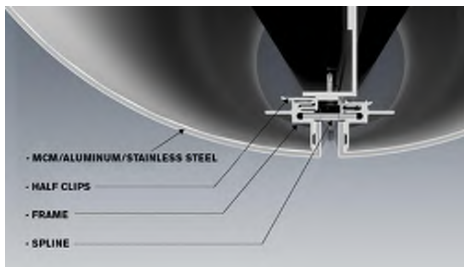
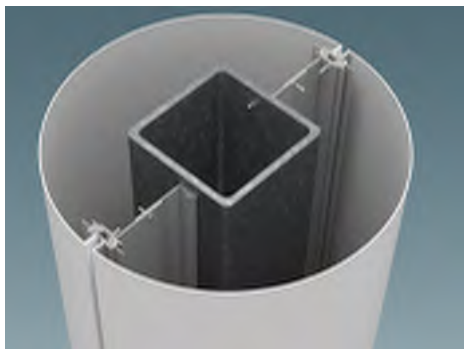


CL300 Dry Joint System



CL300 Dry Joint

The CL300 Dry Joint has a clean finish and looks great with our R3000 or R4000 panel systems.

System Characteristics:

- Rear Ventilated Rainscreen
- 3 Piece Spline Joint
- 1/2" and 3/4" Reveals Available
- Low Maintenance

Face Material:

- Metal Composite Material
- Aluminum Plate
- Stainless Steel
- Galvanized Steel
- Natural Metals (Zinc & Copper)

System Depth: 1 11/16" minimum

Joint Width: 1/2"

Maximum Panel Size/Radius:

We offer various shapes and sizes from as small as 11" in diameter and lengths up to 142".

Tested Systems & Code Compliance

At UBSM we are dedicated to making sure that our cladding systems meet and exceed all the project specific requirements for performance and adherence to local & International Building Code standards. Depending on the system we will clearly identify what tests and procedures were completed internally and with third party assistance.

ASTM E 283 - Static Air Infiltration
ASTM E 330 - Structural Design loads (40psf)
ASTM E 331 - Static Water Infiltration
Florida Product Approval

*Details Available In Autocad & Revit