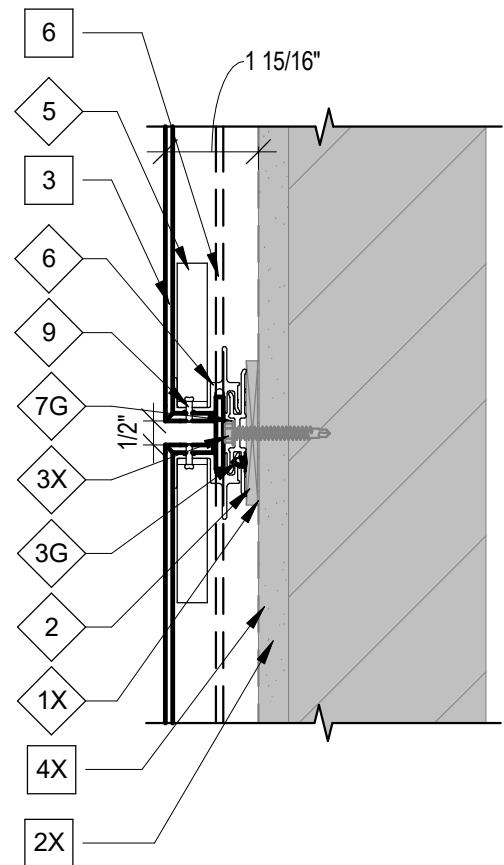


1 R4000 VERTICAL JOINT DETAIL
O400 SCALE: 3" = 1'-0"



2 R4000 HORIZONTAL JOINT DETAIL
O400 SCALE: 3" = 1'-0"

HARDWARE AND MATERIAL SCHEDULE

HARDWARE	
1X	SELF-SEALING TAPE NOT BY UBSM
2	1/4" SHIM BY UBSM, REQUIRED
3B	#10-16x1" PFH TEK-3 BY UBSM
3G	#6x3/8" WFH TEK-3 BY UBSM
3N	SX3-D12 BI-MET BY UBSM
3Q	TUF-S 6x9-A4 BY UBSM
3R	LEVELING BOLT, 1/4"x5/8" BY UBSM
3U	SX3-D10
3X	FASTENER NOT BY UBSM
4	WEEP SCREEN
5	ALUM. CORNER KEY BY UBSM, F.I.
6	ALUM. FRAME BY UBSM, F.I.
7G	ALUMINUM WALL CLIP BY UBSM
7K	ALUMINUM CLIP BY UBSM
7L	C-PLANK CLIP BY UBSM
9	POP RIVET BY UBSM, F.I.
17	1" HAT CHANNEL BY UBSM
17X	1" HAT CHANNEL NOT BY UBSM

HARDWARE AND MATERIAL SCHEDULE

18	2" Z CHANNEL NOT BY UBSM
20	ALUMINUM RAIL NOT BY UBSM
1X	INSULATION NOT BY UBSM
2X	WEATHER RESISTANT BARRIER, NOT BY
3	4MM MCM PANEL BY UBSM, F.I.
4X	WALL CONSTRUCTION NOT BY UBSM
5X	BACKER ROD & SEALANT NOT BY UBSM
6	4MM MCM SPLINE BY UBSM



This document contains information proprietary to UBSM, INC. It is to be kept confidential and not applied, reproduced, used or conveyed to others without written authorization from UBSM, INC.

- GENERAL NOTES**
- 18 G.A. STRAPPING MAY BE REQ'D OVER DENSGLASS SUBSTRATE FOR PANEL ATTACHMENT.
 - SEE DETAILS FOR FASTENER AND FLASHING SEALING PROCEDURES AS REQUIRED BY AIR BARRIER TYPE USED.
 - ALL DIMENSIONS SHALL BE FIELD VERIFIED PRIOR TO FABRICATION.
 - KEYNOTES REFER TO THE HARDWARE AND MATERIAL SCHEDULE. KEYNOTES MARKED WITH AN "X" ARE NOT SUPPLIED BY CEI.
 - DIAMOND \diamond KEYNOTES REFER TO THE CORRESPONDING ID IN THE HARDWARE SCHEDULE.
 - SQUARE \square KEYNOTES REFER TO THE CORRESPONDING ID IN THE MATERIAL SCHEDULE.
 - "F.I." IN THE HARDWARE AND MATERIAL SCHEDULES IS AN ABBREVIATION OF "FACTORY INSTALLED".

R4000 ONLINE
TYPICAL DETAILS

O400