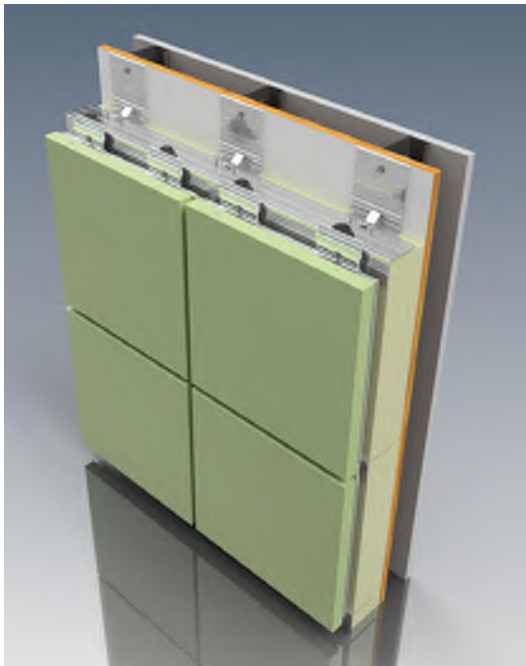




## R3000 Pressure Equalized Rainscreen System



### **Pressure Equalized Rainscreen System**

R3000 Pressure Equalized Rainscreen System, tested to remove the driving forces for water penetration, equalizes the air-pressure on the external and internal sides of this compartmentalized Panel System.

### **System Characteristics:**

- Joint Width of 1/2 & 3/4"
- Independent Spline Joint
- Low Maintenance
- Lets the Wall Breathe
- Available with MCM or Aluminum Plate

### **Tested Systems & Code Compliance:**

At UBSM we are dedicated to making sure that our cladding systems meet and exceed all the project specific requirements for performance and adherence to local & International Building Code standards. Depending on the system we will clearly identify what tests and procedures were completed internally and with third party assistance.

ASTM E 283 - Static Air Infiltration  
 ASTM E 330 - Structural Design loads (40psf)  
 ASTM E 331 - Static Water Infiltration  
 AAMA 501.1 - Dynamic Water Infiltration Test  
 AAMA 508 - Pressure Equalized Rainscreen Test  
 NFPA 285 - Multi-Story Flame Spread Test  
 Florida Product Approval

\*Details Available In Autocad & Revit

### **Face Material:**

- Alucobond®
- Reynobond®
- ALPOLIC®
- Vitrabond®
- Aluminum Plate Alloy 3003 & 5052

### **System Depth:**

1 11/16" minimum, 1 15/16" design

### **Panel Extrusions:**

Aluminum Alloy: 6063-T6  
 Panel Perimeter Extrusion: Continuous

### **Fabricated Panel Tolerance:**

Length: Plus 1mm (0.0394")  
 Width: Plus 1mm (0.0394")  
 Depth: Plus or minus 0.2mm (0.008")  
 Squareness: .5mm (0.016") maximum